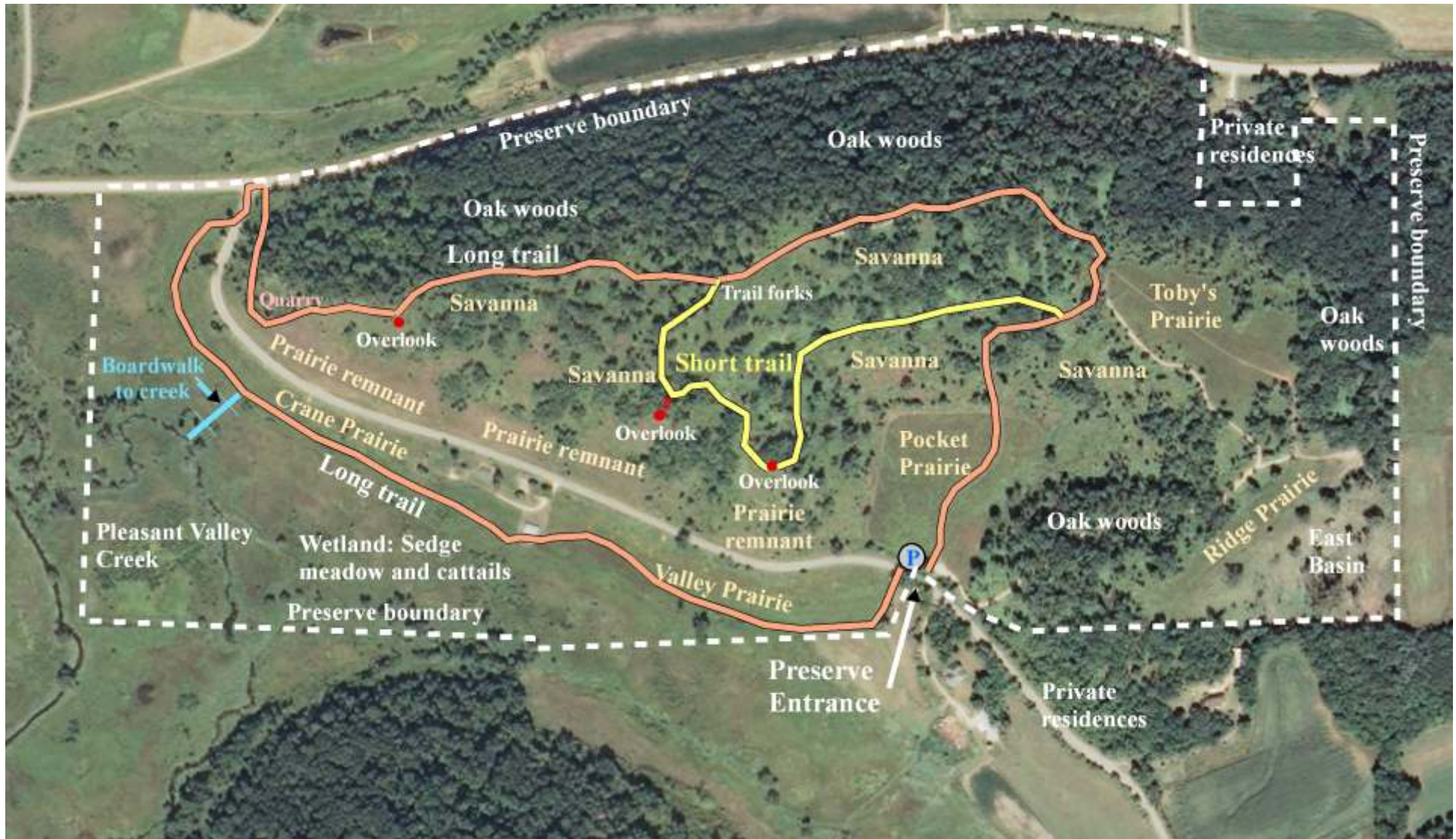


Public trail map: Pleasant Valley Conservancy



ArcGIS graphic by Tom Brock

Long Trail: 1.5 miles; 1.5-2 hrs

Please stay on trail!

Short Trail: 0.6 miles; 30 min-1 hr

Do not pick plants or seeds
Hunting by permission only

Both trails are generally mowed but
have some steep parts

Please park off road facing the Pocket
Prairie entrance

Kathie and Tom Brock
608-238-5050
tdbrock@charter.net
kmbrock@charter.net
<http://PleasantValleyConservancy.org>